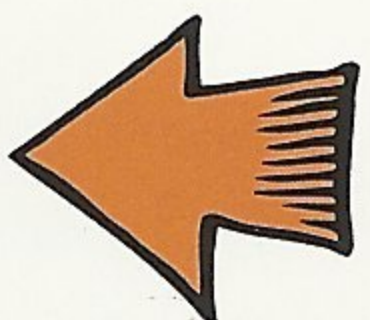
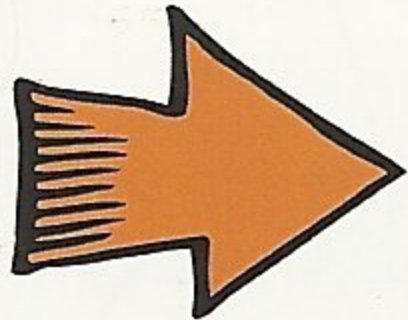
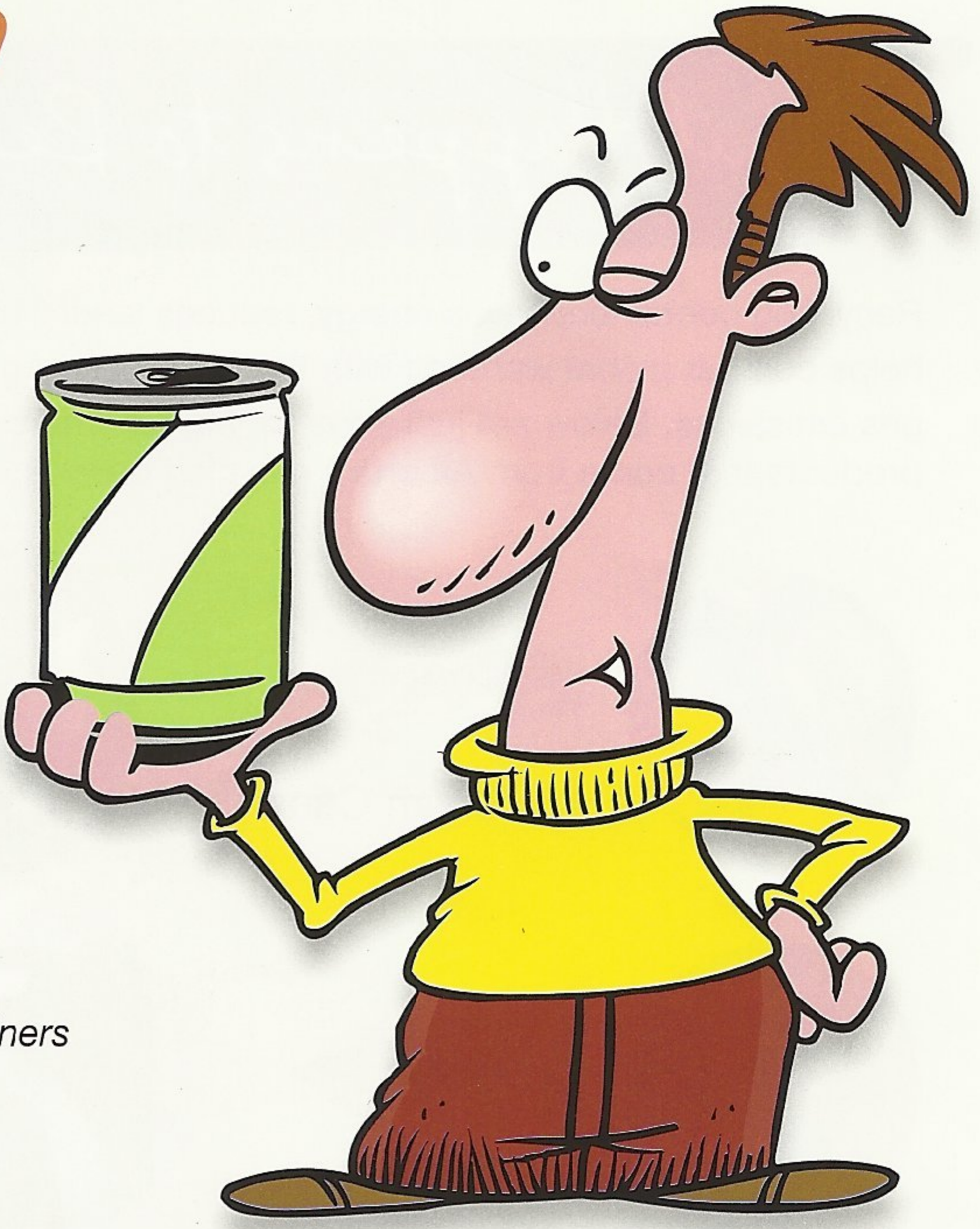


# Which type of containers are Refundable?

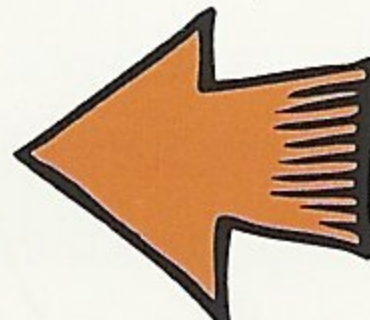
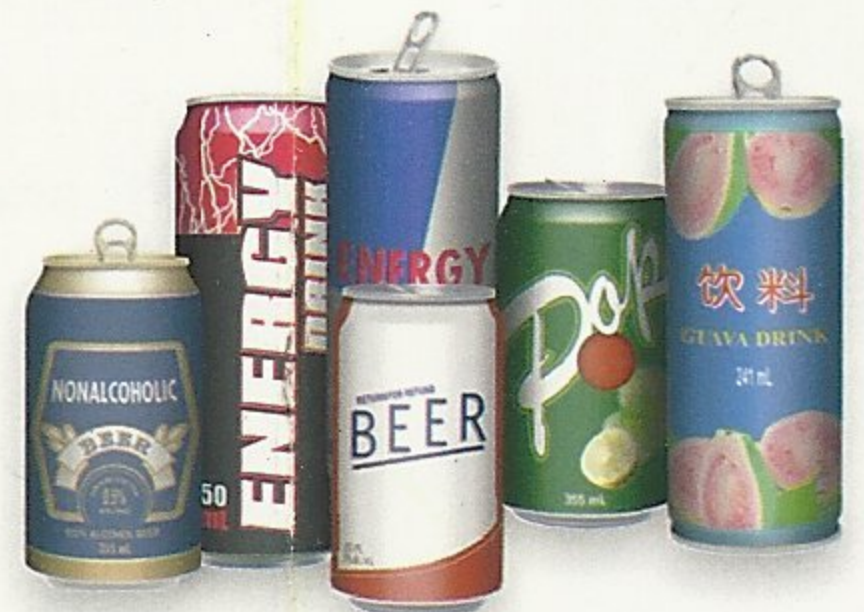
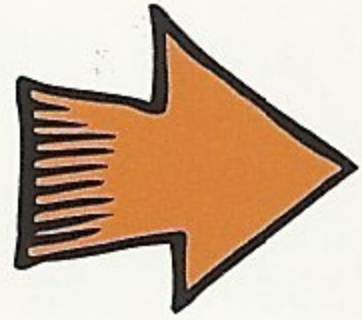
Plastic Drink Bottles  
i.e. water bottles and soft drink bottles.



Plastic Jugs, Poly Cups\* & Bottles  
i.e. clear, coloured and opaque plastic beverage containers including small plastic cups sealed with foil.



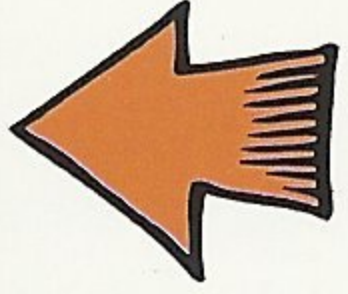
Aluminum Cans  
i.e. soft drinks, juice, 'energy' drinks & beer.



Cartons  
i.e. drink boxes, juice, milk, cream, rice and soy drink cartons



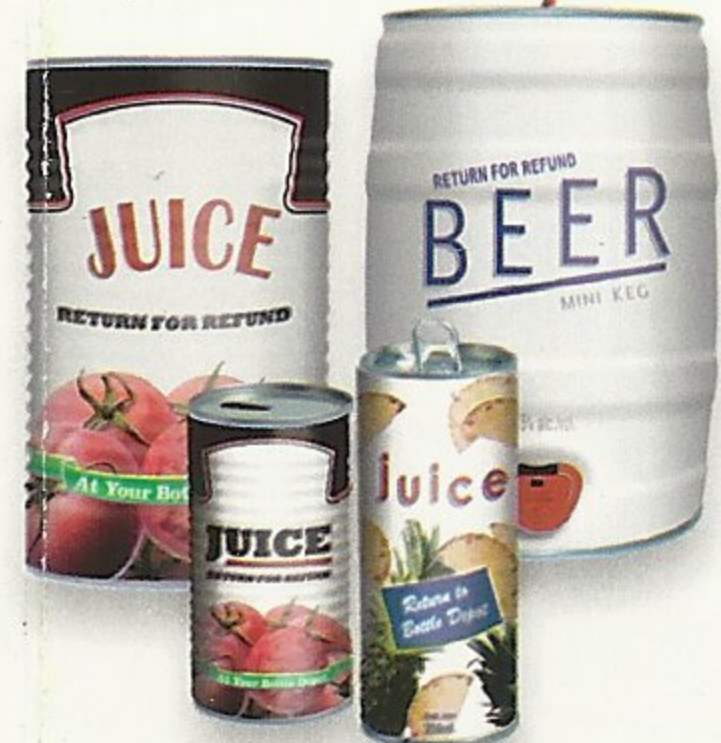
Bag-in-a-Box & Juice Pouches  
i.e. wine, juice.



Glass Bottles  
i.e. coloured & clear wine, juice and beer containers.



Other Metal Cans  
i.e. metal containers other than aluminum ranging from small single serve tins to large tomato and apple juice cans.



All "ready-to-serve" beverage containers sold in Alberta are part of the collection system. There are over 85,000 different beverage container products registered in Alberta. Shown are just a few samples of common containers. Please check with your local bottle depot if you are not sure if a refund applies to a container, or contact us online at: [www.bcmb.ab.ca](http://www.bcmb.ab.ca)

\* **PLEASE NOTE:** Food containers and plastic & paper cups that are not sealed by a manufacturer are NOT part of the Alberta collection system regulations and are NOT eligible for refund. Infant formula containers and any containers purchased outside Alberta are also NOT eligible for refund.